



DIGITAL-ANALOG CONVERTER



DAC V800 (version 2.0)

USER'S MANUAL

Content

Theme	Page
About Vioelectric	3
Safety Instructions	5
The Earth / Grounding Concept	7
Connection / Connectors	9
General	10
Operation	11
Things to know	18
Dismantling / Jumper Setting	20
Technical Data	22
Conformity Statement	23
Warranty	24

Cordial thanks for your decision in favour of a

VIOLECTRIC product !

VIOLECTRIC is a trademark and product line of Lake People electronic GmbH. Lake People electronic GmbH develops, manufactures and distributes products in the professional range, for broadcast, television, airports, exhibition halls, festival venues, theatres, large-scale installations, private studios and more. In the private sector as well, Lake People products become increasingly popular due to their outstanding quality.

The **VIOLECTRIC** trademark and product line is specially intended to supply the Hi-Fi and High-End market with its specific requirements.

Who develops **VIOLECTRIC equipment ?**

VIOLECTRIC devices are exclusively developed in Germany by the engineers of Lake People electronic GmbH. In doing so, the team of developers can draw on twenty years of experience and countless products for the pro-audio domain.

Among others, the first German-made 20-bit A/D and D/A converters were developed by Lake People in the early nineties of the past century.

Who manufactures **VIOLECTRIC equipment ?**

VIOLECTRIC devices are exclusively manufactured in Germany by Lake People electronic GmbH or contractors in the company's vicinity.

Lake People - and by association **VIOLECTRIC** - put high emphasis on domestic manufacturing. As well, all component suppliers are chosen in order to achieve the main part of added value inland.

How do **VIOLECTRIC** devices get to the customer ?

VIOLECTRIC devices can be obtained from respective specialist suppliers. If there is none such accessible regionally, the customer is supported by transregional distribution partners (google may help...) and, of course, by Lake People electronic GmbH themselves.

... and if it doesn't work like it should ?

VIOLECTRIC devices are covered by a 24-month warranty. In case of any malfunction during this period, they can be shipped to the manufacturer directly. Of course, the client will benefit from **VIOLECTRIC**'s and Lake People's full technical support even when warranty has expired. Any technical questions or need for advice is welcome.



is a subsidiary of



LAKE PEOPLE

LAKE PEOPLE electronic GmbH
Turmstrasse 7a
D-78467 Konstanz

Fon +49 (0) 7531 73678

Fax +49 (0) 7531 74998

www.vioelectric.de www.vioelectric.com
www.lake-people.de www.lake-people.com

General Safety Instructions

WARNING

For your protection, please read the following:

Water, Liquids, Moisture:

This appliance should not be used near water or other sources of liquids.

Care should be taken so that objects do not fall and liquids are not spilled into the enclosure through openings.

Power Sources:

The appliance should be connected to a power supply only of the type described in the operating instructions or as marked on the appliance.

Grounding:

Care should be taken that this appliance is operated with proper grounding only.

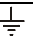
Power Cord:

Power supply cords should be routed so that they are not likely to be walked on or pinched by items placed upon or against them, paying particular attention to cords at plugs, convenience receptacles, and the point where they exit from the appliance.

This unit is equipped with a 3-pole mains cable with German 3-pin mains plug.

In some countries this unit must be operated with a mains adaptor, supplied by the owner.

Please refer to the table below to connect a mains plug:

OVERVIEW: POWER CORD FUNCTION AND COLORS			
CONDUCTOR		COLOR	Alternativ
L	LIVE	BROWN	BLACK
N	NEUTRAL	BLUE	WHITE
E 	PROTECTIVE EARTH	GREEN+YELLOW	GREEN

U.K. Mains Plug Warning:

A moulded mains plug that has been cut off from the cord is unsafe. Discard the mains plug at a suitable disposal facility.

NEVER UNDER ANY CIRCUMSTANCES SHOULD YOU INSERT A DAMAGED OR CUT MAINS PLUG INTO A 13 AMP POWER SOCKET. Do not use the mains plug without the fuse cover in place. Replacement fuse covers can be obtained from your local retailer. Replacement fuses are 13 amps and MUST be ASTA approved to BS 1362.

Mains Fuse:

The mains fuse of this appliance is soldered in place and accessible from the inside only!!

A blown fuse may indicate an internal problem and should be replaced during qualified servicing or repair work !!

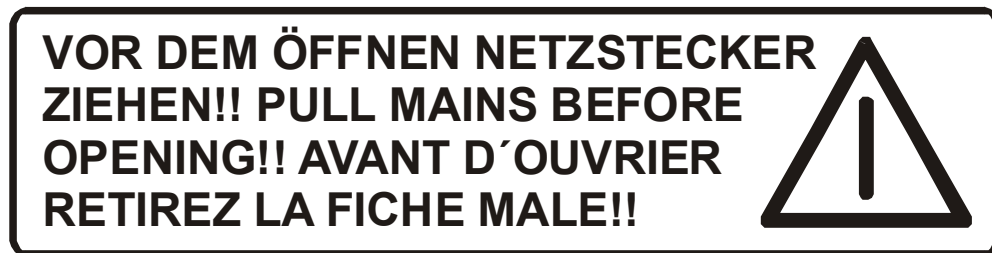
Switchable Power Supply:

Connect this unit to the power source indicated on the equipment rear panel only to ensure safe operation !!

This unit is provided with an internally settable mains supply for 115 / 230 V AC.

Service / Repair:

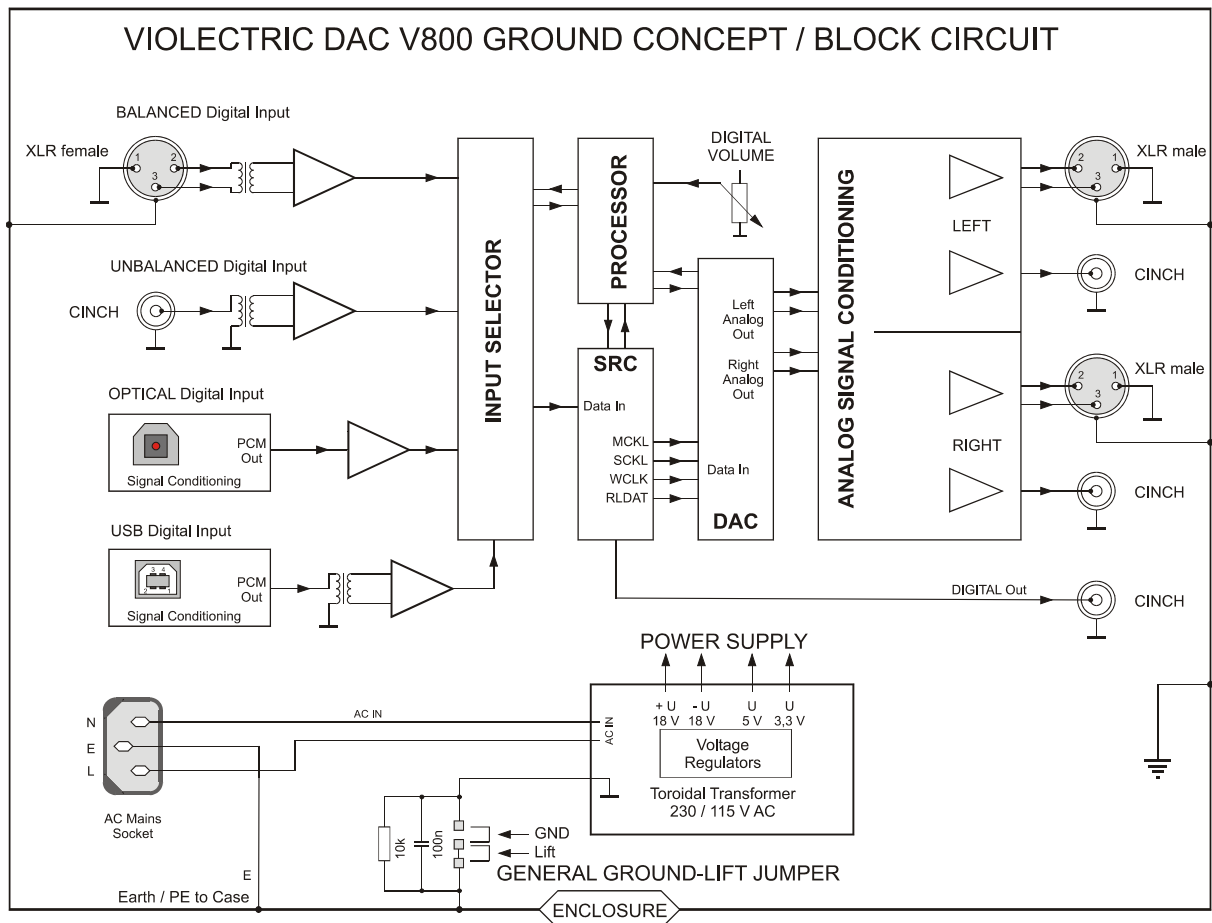
To reduce the risk of fire or electric shock, the user should not attempt to service the appliance beyond the measures described in the operating manual. All other servicing or repair should be referred to qualified personnel !!

**Electromagnetic Compatibility**

This unit conforms to the Product Specifications noted as **Declaration of Conformity** at the end of this manual. Operation is subject to the following conditions:

- this device may not cause harmful interferences
- this device must accept any interference received, including interference that may cause undesired operation
- this device must not be operated within significant electromagnetic field

The Earth / Grounding Concept



General GROUND-LIFT Jumper (accessible from the inside. Mind the SECURITY INSTRUCTIONS !!):

Ex-works this jumper is set to the **LIFT** position.

The internal ground potential is “lifted” by means of this jumper.

As a result, the interconnection for DC voltages and lower frequencies (< 150 Hz) will be cut. Higher frequencies will be bled off to earth potential through the RC filter. The LIFT position is helpful in case of hum or jitter caused by different ground/earth potentials.

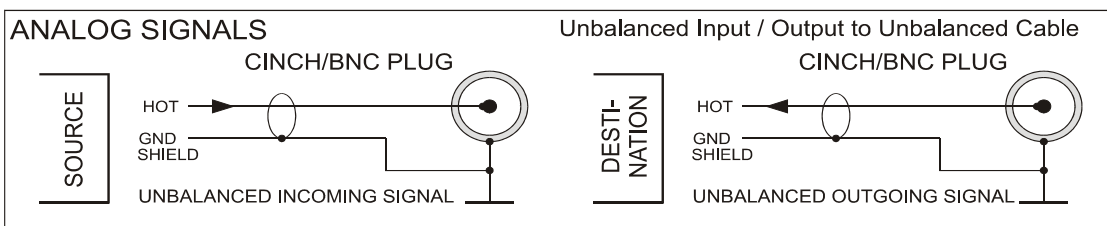
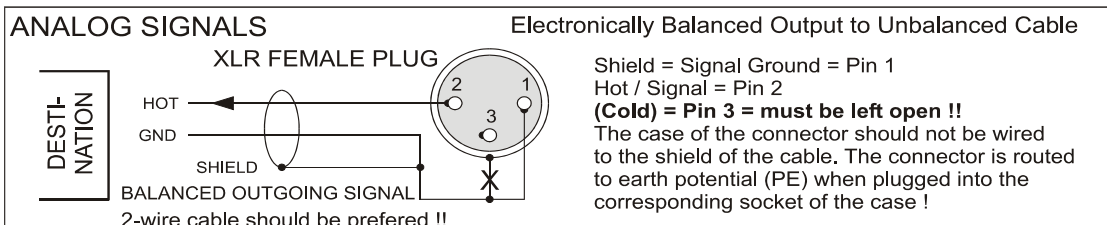
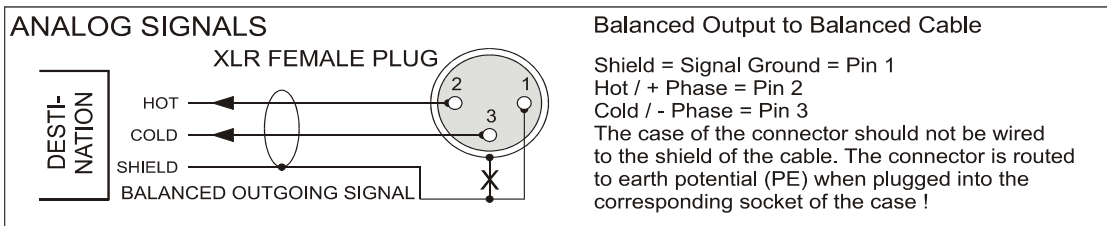
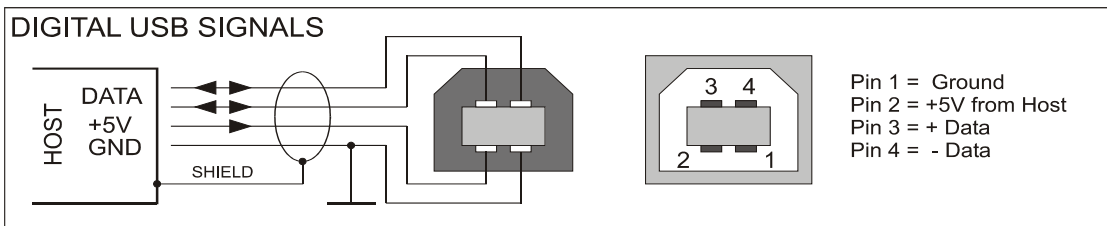
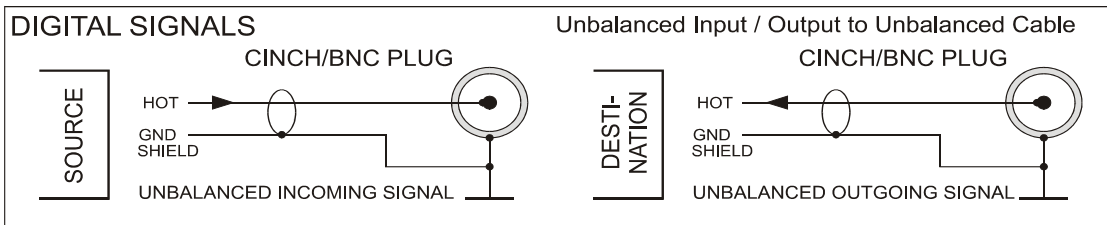
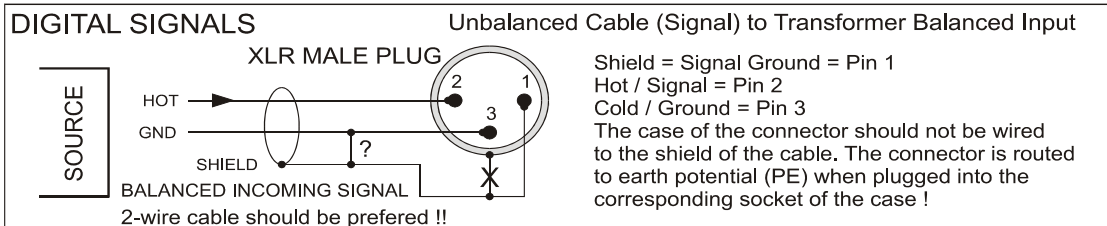
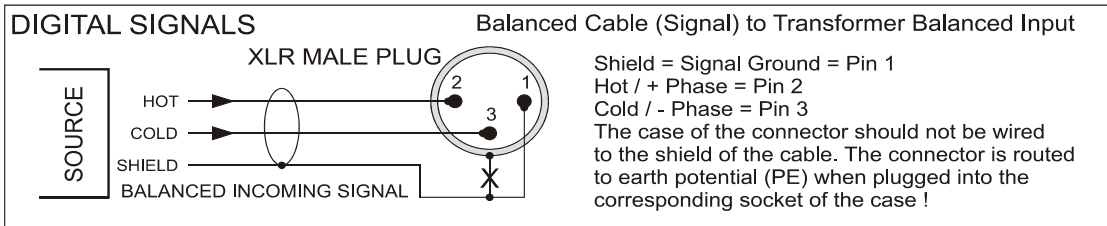
Of course full electrical protection is guaranteed as the case is always connected to ground/earth potential !

Unfortunately there is no general recommendation how to solve hum and jitter problems - or even minimize them. The best way to succeed is to check different options !! In case of balanced cables, it should always been verified if the shield of the cable is connected to the shell of the XLR connector. The shell is ALWAYS connected to earth potential when the connector is inserted !!

Concerning ANALOG inputs and outputs, the relationship between ground and earth may be modified. Electrical safety is always ensured, since the earth conductor is permanently connected to the enclosure !!

**Please note that with jumpers in LIFT or GROUND position
EMC emission might occur,
for which the user is responsible only !**

Connection / Connectors



GENERAL INFORMATION

The VIOLECTRIC DAC V800 is a top-range D/A converter, distinguished by its very particular analog output stages. By means of their specially designed, variable low-noise and low-distortion circuitry, the DAC V800 fulfils even highest demands.

Features:

- four switchable digital inputs:
 - transformer balanced via XLR (AES 3), 24 Bit / 192 kHz
 - coaxial via cinch (S/P-DIF, AES-3id), 24 Bit / 192 kHz
 - optical via TOS-Link, 24 Bit / 192 kHz
 - USB-96 input Style B, **transformer-coupled**, 24 Bit / 44.1, 48, 96 kHz
 - optional USB-192 Input, sample-rate 32 – 192 kHz
- coaxial digital output
- LED signaling for active input and lock
- switchable mute function
- resampling / upsampling by multipliers 1, 2, 4 and "BEST"
- Delta-Sigma D/A converter with 120 dB dynamic range / -112 dB THD
- sophisticated analog output stages, with maximum dynamic range and minimum distortion
- digitally operated output level control
- additional internal maximum-level jumpers:
 - +24 /18 /15 /12 /6 dBu, ex works preset to +15 dBu
 - (unbalanced out: 9 dB less)
- high-quality op-amps along the signal path
- high-quality MKP capacitors along the signal path
- 0,1 / 1 % metal film resistors throughout the unit
- analog outputs electronically balanced via XLR, unbalanced via cinch
- supersized toroidal transformer
- elaborate supply voltage filtering and stabilization
- Nextel-coated, thick-walled aluminum case
- solid aluminum front panel, laser-engraved

THE CASE

The DAC V800's case as well as the front/rear panels are made of solid aluminium. This choice of material ensures high mechanical stability and resistance.

EARTH AND GROUND

The DAC V800's case is grounded. Internal reference ground is bridged to protective earth by means of a jumper. The jumper is set to the 'LIFT' position (see also: page 7 "Earth/Ground concept", page 21 "Technical Appendix").

POWER SUPPLY

Mains power is provided via a three-pin IEC/CEE socket and mating "cold-appliance" mains cord with Schuko-type plug. The device is normally set to 230V mains, whereas the actual voltage may vary between 190 and 250 volts for flawless operation.

The US and Japan version comes with a US style mains cord and the unit is set to 115 V mains. Here the AC voltage may vary between 85 and 125 volt for flawless operation.

A toroidal transformer provides the internal operating voltages of +/-18 V approx.

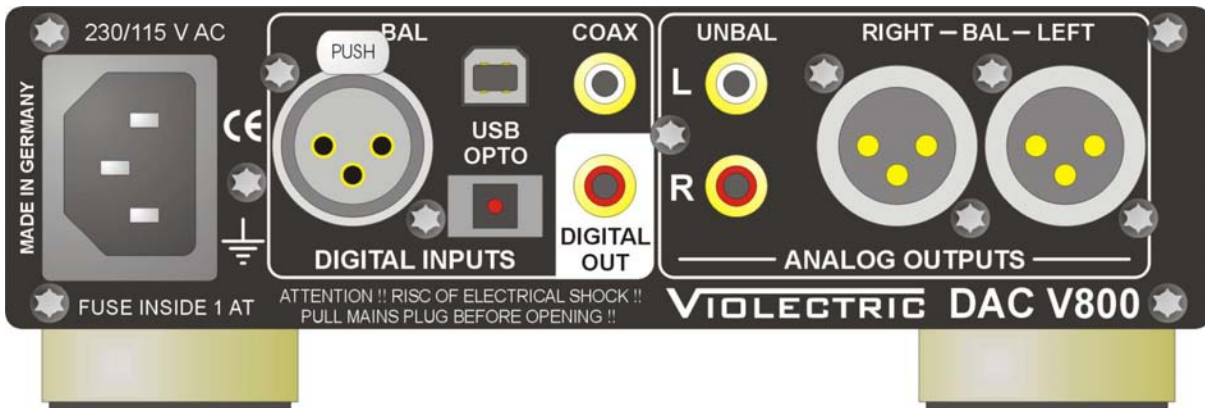
MAINS FUSE

The 0.25A time-lag fuse is soldered in place on the circuit board. In case, it must be replaced with a fuse of the same type only.

CAUTION !!

MIND THE SAFETY INSTRUCTIONS:

A blown fuse indicates an internal fault and should be replaced during qualified repair or servicing only !!



THE DIGITAL INPUTS

Four digital inputs are found on the unit's rear panel. They are denoted according to their electrical properties: balanced, coaxial (unbalanced), optical and USB.

You won't find terms like *AES*, *S/P-DIF*, *professional* or *consumer* here, since it doesn't matter at all which signal type is applied to a dedicated input. The electrical inputs (Bal and Coax) accept PCM-encoded digital audio data with a word length of 16 ... 24 Bit and 28 ... 210 kHz sample rate. So does the optical input.

The USB-96 input accepts audio data from a host (notebook or PC) with word length up to 24 Bit and fixed sample rate of 44.1, 48 or 96 kHz.

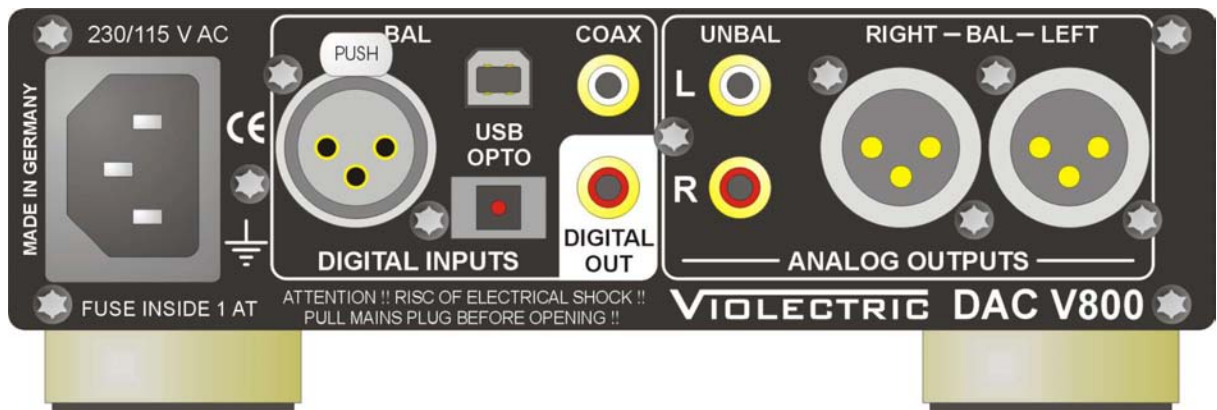
The optional USB-192 input accepts 32, 44.1, 48, 88.2, 96, 176.4 und 192 kHz. In order to avoid any interference caused from the host, the USB input is fully insulated, with the signal coupled via transformer.

The balanced input is equipped with an XLR socket according to AES 3-1992, transformer-balanced, at 110 ohms input impedance and 200mV sensitivity at $T_{nom}/2$.

The coaxial input is fitted with a cinch socket according to IEC 958 and AES-3-id resp., unbalanced at 75 ohms input impedance and 200 mV sensitivity at $T_{nom}/2$

The optical input provides a TOS-Link connector according to EIAJ RC-5720.

The USB terminal is specified as audio interface according to USB 1.1 / 2.0 standard. The USB-192 version needs a proprietary driver for proper operation which can be downloaded here: www.vioelectric.de



THE DIGITAL OUTPUT

The digital output is located on the rear panel. It is fitted with a Cinch socket according to IEC 958, unbalanced at 75 ohms output impedance. The level at this output however complies with AES-3-id (1 Vss).

The data word on this output is the same as on the selected input by default. But the output data may also be processed nearly free of jitter by the resampling module in “BEST”-mode.

To change the mode from the digital output press the “MODE” button for about 2 sec.

Now either the “x1” LED is lit (default) or the “BEST” LED is lit. Pushing shortly the “MODE” button will change the status.

Store your entries and leave the menu by pushing the “MODE” button for 2 seconds.

When “x1” mode was selected the digital output word will be the same as the digital input word with identical same sample-rate, regardless which resampling mode (OFF, x1, x2, x4) was selected.

When “BEST” was selected there are the following varieties:

	Internal and Output Sample-Rate at selected Resampling:				
Input Sample-Rate (kHz)	OFF	1x	2x	4x	BEST
28 - 55 kHz	follows input	48kHz	96kHz	192kHz	96kHz
55 - 110 kHz	follows input	96kHz	192kHz	x	96kHz
110 - 210 kHz	follows input	192kHz	x	x	96kHz



THE ANALOG OUTPUTS

The analog outputs are situated on the rear panel, fitted with electronically balanced XLR terminals, as well as cinch sockets.

Both outputs may be used simultaneously !!

Polarity of the XLR terminals complies with AES 14-1992:

1 = ground, 2 = (+) in phase, 3 = (-) out of phase.

Source impedance of all analog outputs is significantly lower than 1 (one) ohm !

NOTE:

When connecting unbalanced lines to the balanced outputs, pin 3 must not be bridged but left unused. In this case the resulting output level will be 6 dB less.

THE POWER SWITCH

The unit is activated by means of the power switch. Power-on status is indicated by the blue LED below.

INPUT SELECTION

By pressing the "INPUT SELECT" button, the inputs USB > BALanced > COAXial > OPTO can be selected in clockwise order.

If a valid signal is present at the corresponding input, the blue "lock" LED will come up. Unused inputs or such with an invalid digital signal present are indicated by the red "MUTE ON / ERROR" light.

THE MUTE BUTTON

Output signal is fully cut by means of the “MUTE“ button. When engaged, the red “MUTE ON / ERROR“ LED will light up.

RESAMPLING

Resampling is a mighty feature for the transformation/restoration of jittered signals into high-quality signals. As well, the signal quality of 44.1 or 48 kHz sources can be improved by converting them to a higher rate. This also complies to the USB input which often suffers from jitter caused by improper treated computer outputs. With the aid of resampling process nearly all jitter (and not only specific ones) is removed from the USB data stream without using “asynchronous USB mode” which often is the cause for the next issues. We know that computers are solving problems which haven't been existing before.

This isn't mystery at all, but a feature offered by so-called sample rate converters - available since the nineties of the past century.

While early sample rate converters could provide conversion ratios of 1:2 to 2:1 (at 100dB dynamic range) only, ratios of 1:16 to 16:1 at 140 dB dynamic range are feasible today.

In principle, the digital data stream is asynchronously disassembled by a DSP specially developed for this purpose, and can be recombined at virtually any sample rate desired.

By means of this process, all potential jitter vanishes almost completely and - due to the higher sampling rate - the analog filters after the converter stage can follow a much more straightforward and "musical" design. Furthermore, all digital input signals will be completed to 24 bit signals what is valuable in conjunction with the digital volume control.

THE RESAMPLING BUTTON

By pressing the “RESAMPLING“ button, the modes OFF > x1 > x2 > x4 > BEST can be stepped through in clockwise order.

See also the table on page 13 for the resulting sample-rates.



- OFF

lights up when the resampling function is deactivated. The digital input word is forwarded to the D/A converter without alteration.

- x1

The yellow "x1" LED indicates that the resampling function is activated. The digital input word will be recombined and forwarded to the D/A converter at original sample rate.

- x2

The yellow "x2" LED indicates that the resampling function is activated. The digital input word will be recombined and forwarded to the D/A converter at twice the original sample rate.

If the input sample rate exceeds 110 kHz, the unit switches back to "x1" mode automatically.

- x4

The yellow "x4" LED indicates that the resampling function is activated, The digital input word will be recombined and forwarded to the D/A converter at four times the original sample rate.

If the input sample exceeds 110 kHz, the unit switches back to "x1" mode automatically or to "x2" mode in excess of 55 kHz.

- BEST

The yellow "BEST" LED indicates that the resampling function is activated. The digital input word will be recombined and forwarded to the D/A converter at a sample rate of 96 kHz, a rate at which most contemporary converters perform best.

THE VOLUME CONTROL

Analog output level is set by means of the "VOLUME" control. Level control as such is effected within the D/A converter for both channels simultaneously by digital processing.

Therefore, no noise, no scratching, no crosstalk or gang errors can occur at all. Control accuracy is 0.5 dB over a 120dB range.

Since the control affects data word length (and so: signal accuracy), a setting closest possible to the right end stop should be chosen for the maximum desired loudness.

ABOUT THE ANALOG OUTPUT LEVEL ...

Unlike in the analog world, digital technology uses a clearly defined maximum level, described as 0dBFs, or "zero deciBels Full scale" in clear text. From this maximum downward, signal levels are expressed with a negative sign.

The "translation" of the digital level into analog is provided by the D/A converter and is extremely flexible, whereby several standards have established.

Professional broadcast facilities in Germany - i.e. radio and TV stations - understand 0 dBFs as equivalent to +15 dBu analog level. In other countries this may be handled differently.

Notabene, +15 dBu represent a voltage of 4.5 V_{eff} which may exceed the capabilities of many audio devices designed for a voltage swing of 1...2 volts. Therefore, the maximum output level of the DAC V800 can be adapted by means of internal DIP switches. While factory-preset to +15dBu, the maximum output level can as well be set to +24 / +18 / +15 / +12 / +6 dBu (with level knob fully clockwise). For further details, see appendix page 21.

The values above apply to the balanced outputs. Level at the unbalanced outputs will be 9 dB lower, i.e. +15 / +9 / +6 / +3 / -3 dB.



Of course, all these settings are effected on the "active" side of the circuitry, thus leaving output impedance completely unaffected. By means of the active analog output adaptation to external conditions, there are only negligible effects on overall performance... if at all ! Furthermore, analog output level is controlled by means of a potentiometer on the front panel. Its setting is translated in the digital domain only, thus excluding any kind of scratching, crosstalk or gang errors.

Since the potentiometer affects data word length (and so: signal accuracy), a setting closest possible to the right end stop should be chosen to achieve the maximum desired loudness. Coarse level should always be set by means of the DIP switches described above.

HOW IT ALL WORKS...

The DAC V800 offers high-class technology by means of well thought-out handling, a variety of inputs, the resampling module, a top-notch converter and, above all, its outstanding and flexible analog output circuitry.

Taken from one of four possible inputs, the digital signal is forwarded to the resampling module. Its business is to prepare the incoming signals for processing in the subsequent circuitry. As well, the desired resampling ratio is set at this stage.

The resampling module recognizes the input data as PCM audio and evaluates the status bits found in the digital signal. Furthermore, the

resampling module generates auxiliary clock signals needed for further processing of the digital signal within the unit.

After the resampling stage, an AES/EBU- (or S/P-DIF-) encoded PCM signal is sent to the rear digital output, while the data contents and auxiliary clocks are fed to the digital-to-analog converter.

The D/A converter comprises a digital filter, the volume control, the stereophonic converter as such, as well as the analog output filters. It is based on a delta-sigma architecture and provides a dynamic range of 127 dB and 64-...128-times oversampling.

The internal frequency of the digital signal (and potential interference therein) is very high in comparison with the useful analog frequencies. Therefore, the subsequent analog low-pass filters have to meet less severe requirements in terms of high-frequency roll-off and can therefore be realized as "musical", discrete two-pole filters.

Without careful consideration of the analog output stages it wouldn't have been possible to make the outstanding performance of the top-notch converter available at the analog outputs.

In case of the DAC V800, the converter is followed by an amplifier specially designed for this purpose, with a topology similar to an instrumentation amplifier.

It distinguishes itself by a wide dynamic range, minimum distortion and high flexibility with regard to the achievable output level.

Within this amplifier, the output currents of the D/A converter are transformed into voltages, while any interferences and processing frequencies are completely removed.

Gain - i.e. output level – can be set by means of DIP switches over a very wide range. Fine gain control is provided by trimmers. An error amplifier caters for minimum DC offset.

Only now follows the output driver stage, feeding the output signal to the corresponding terminals at extremely low impedance.

The balanced and unbalanced outputs can be used at the same time, since they are buffered individually. Output impedance for all outputs is significantly lower than 1 ohm.

DISMANTLING / JUMPER SETTINGS

Hint:

Here we are talking about internal adjustments inside your HPA V181.
You are in need of two screw drivers TORX style size T8 and T10.

You should by all means

PULL THE MAINS PLUG !!!

Only thereafter the settings can be altered without any hazard.

DISMANTLING

As the 4-pin XLR socket is fixed to the back side of the front panel,
the front panel may NOT be disassembled !!

To avoid damages please follow the instruction below:

1. screw off both upper screws on the front panel
2. screw off both upper screws on the back panel.
3. unscrew ALL remaining screws on the back panel by 1/10 " (2-3 mm)
4. now lift the upper lid
5. make your personal jumper settings
5. assemble the unit in reverse order

TECHNICAL DATA DAC V800

All Measurement RMS unwt'd., 20 Hz - 20 kHz, Sample-rate 48 kHz, digital level = 0 dBFs, analog output level = +15 dBu, Resampling set to x1, as not otherwise noted

Digital Inputs:	- 1 x XLR female, transformer balanced, impedance 110 ohms according to AES3-1992, Sensitivity 200mV @ Tnom/2 - 1 x Cinch, unbalanced, impedance 75 ohms according to IEC 958 resp. AES-3-id Sensitivity 200mV @ Tnom/2 - 1 x optical, TOS-Link, acc. to EIAJ RC-5720 - 1 x USB, Style B, according to USB 1.1 / 2.0 transformer decoupled
Digital Input Formats:	AES/EBU, S/P-DIF up to 24 Bit
Input Sample Rates:	Bal & Coax & Opto 28 - 210 kHz USB-96: 44.1, 48, 96 kHz USB-192: 32, 44.1, 48, 88.2, 96, 176.4, 192 kHz Asynchron-Mode supported !
Analog Frequency Range :	4 Hz ... 53 kHz (-0,5 dB)
THD (k_2 ... k_{10}):	-112 dBu
Dynamic Range (A-wtd):	122 dB
Crosstalk (@ 1 kHz):	-125 dB
Crosstalk (@15 kHz):	- 110 dB
Bal. Analog Outputs:	2 x XLR male
Bal. Analog Output Level:	+24 / +18 / +15 / +12 / +6 dBu (selectable) ex works set to +15 dBu,
Output CMRR(@ 15 kHz):	> 60 dB
Output Impedance:	< 1 ohms
Unbal. Analog Outputs:	2 x Cinch
Unbal. Analog Output Level:	+15 / +9 / +6 / +3 / -3 dBu (selectable) ex works set to +6 dBu,
Output Impedance:	< 1 ohms
Mains Voltage :	230 V AC / 115 VAC max. 10 VA
Case , Back:	Aluminium, Nextel coated
Front:	Aluminium, milled, sanded, black anodized, laser engraved
Dimensions:	170 x 49 x 226 mm (B x H x D)

EC CONFORMITY STATEMENT:

We herewith declare that the following unit

Name: **VIOLECTRIC DAC V800**

Serial No. : -all -

is in conformity with the following EC directives:

2006/95/EG	Low voltage directive
2014/30/EC	EMC directive
EN 60065:2002+A12:2011	Security directives for audio-, video- und similar electronic devices
JIS C6065:2013	
2001/95/EC	General Product Safety Directive

For verification of conformity with regard to electromagnetic compatibility the following harmonized standards are applied:

EN 50081-1:1992	Generic emission standard
EN 50082-1:1992	Generic immunity standard

Product family standard for audio, video, audio-visual entertainment apparatus:

EN 55013:2001	EN 61000-3-2:2000
EN 55020:2002	EN 61000-3-3:1995

2011/65/EU, RoHS directive

2012/19/EU, WEEE directive / Member No.: DE 26076388

This declaration is given under responsibility of:



LAKE PEOPLE

LAKE PEOPLE *electronic GmbH*
Turmstrasse 7a
D-78467 Konstanz
Fon +49 (0) 7531 73678
Fax +49 (0) 7531 74998

A handwritten signature in blue ink that reads "Fried Reim".

Konstanz 26.09.2014 Fried Reim CEO

WARRANTY

Since 1986 we are constructing and manufacturing sophisticated electronics for ambitious customers.

Since the early beginnings we are trying hard by accompanying measures, the use of 1st choice components and multiple quality checks during production to avoid faults at large.

We are quite effective in that and this is – amongst others - why we enjoy such a good reputation.

Despite all accurateness faults may occur which may derogate the proper operation of your product.

In this case your unit is protected by a **5-year Warranty !**

Needless to say that we will care for your product even after the expiration of the warranty. If it is necessary please dispatch your item to:

Lake People electronic GmbH
Turmstrasse 7a
D-78467 Konstanz

Fon +49 (0) 7531 73678
Fax +49 (0) 7531 74998
E-Mail info@lake-people.de

Your warranty claim begins with the date of purchase, which should be denoted on your proof of purchase.

In case of return do not forget to include the receipt of sales or a copy of the receipt.

Please also include a short description of the fault(s).

For the reshipment we need your correct address !!

Care for a safe packaging. Best is to use the original packaging.

Please keep in mind that we cannot accept collect freight.

We will grant a quick repair and quick return of the unit.

In case of a warranty repair we will reship free of charge.

Please denote here the serial number and the date of purchase:

Serial Number

Date of Purchase